

PANTONE® Goe™

Digital Libraries

USER GUIDE



The color of ideas.™

PANTONE® Goe™

Digital Libraries



Pantone, Inc.
590 Commerce Boulevard
Carlstadt, New Jersey 07072 U.S.A.
t. 201.935.5500 f. 201.896.0242

PANTONE Colors may not match PANTONE-identified standards. Consult current PANTONE Color Publications for accurate color. Exported palettes are only viewable in the supported applications specified.

PANTONE®, Goe™ and other Pantone, Inc. trademarks are the property of Pantone, Inc. Adobe, Creative Suite, Illustrator, InDesign, and Photoshop are either registered trademarks or trademarks of Adobe Systems Incorporated in the United States and/or other countries. Macintosh, Mac and Mac OS are trademarks of Apple Computer, Inc. Microsoft, Windows, and Windows Vista are either registered trademarks or trademarks of Microsoft Corporation in the United States and/or other countries.

All other product names and trademarks are the property of their respective owners. Any omission of such marks from any product is regretted and is not intended as an infringement on such trademarks.

© Pantone, Inc., 2008. All rights reserved. Pantone, Inc. is a wholly owned subsidiary of X-Rite Incorporated.

TABLE OF CONTENTS

PANTONE Goe coated and uncoated digital libraries	2
Supported Applications	3
System Requirements	4
Easy Install Applications	4
How to access a color palette	5
Adobe® Illustrator® 9, 10, CS, CS2 & CS3	5
Adobe Photoshop® 7, CS, CS2 & CS3	6
Adobe InDesign® CS, CS2 & CS3	7
Manual Install Applications	8
Adobe Illustrator: Version 8.0 & later	8
Adobe Photoshop: Version 5.5 & later	8
Adobe InDesign: Version 2.0 & later	8
Technical Support	9
How to Contact Us	9

How can our new PANTONE Goe coated and uncoated digital libraries help you?

The PANTONE Goe digital libraries allow you to integrate the PANTONE Goe coated and uncoated color palettes into design software programs such as Adobe Photoshop, Adobe Illustrator, and Adobe InDesign. Providing optimized color values, the PANTONE Goe digital libraries enable the best possible representation of PANTONE Goe colors on monitors and eliminates the need to adjust those colors in order to get them to display properly in designs and illustrations.

What is in the PANTONE Goe digital libraries?

The PANTONE Goe coated and uncoated digital libraries contain the best representation of color using the most appropriate color model supported by each application. Where supported, the palette file contains colors in the CIE L*a*b*, D50, 2° color space for the most accurate representation of color. In applications where CIE L*a*b* is not supported, the palette contains Adobe 1998 RGB values for each color.

About the PANTONE Goe System

The PANTONE Goe System, featuring 2,058 spot colors, was created to address 40 years of evolutionary changes within the graphics and print industries. This new vision of color, from inspiration to application, offers creative and reproductive flexibility. Utilizing a unique numbering system, PANTONE Goe provides an extended range of 2,058 chromatically-arranged colors that are easy to locate and specify using guide, chip and software formats on coated and uncoated stock. The colors, designed to be printed with uniform and industry typical ink film thicknesses, enable equal drying times and more control for matching color on press. Using only ten Mixing Bases plus PANTONE Clear, Goe colors are simple to mix. Goe inks are readily available worldwide and when printed on coated paper, are receptive to aqueous and UV coatings.

Goe System components include:

- PANTONE GoeGuide™ for color selection and specification
- PANTONE GoeSticks™ adhesive backed chips
- myPANTONE™ palettes software for color selection and palette creation

The Goe Naming System

The naming convention for the PANTONE Goe colors is based on the 165 full strength colors and the families of colors derived from them. Individual color names reflect this approach using a three-part numbering system, plus the substrate identifier where “C” refers to “Coated” stock. A “U” refers to “Uncoated” stock.

Referring to either the GoeGuide or GoeSticks publications and using color name “PANTONE 16-4-1 C” for example:

- The number “16” tells us the color resides in the sixteenth color family and stems from the full strength color in that series.
- The number “4” indicates the page number within that series which may be as few as one page, or as many as five.
- The last number “1” is an indicator of where the color appears on the page.

Supported Applications

We have provided ready-to-use PANTONE Goe palettes for a variety of Adobe Creative Suite® applications. Most applications, if they are cross-platform, handle loading color palettes in identical ways. The instructions provided for the use of each file type, where appropriate, are cross-platform. If there are differences in handling color palettes, it will be noted accordingly.

The installer will place the PANTONE Goe folder on your Windows® System in “Program Files” and on your Macintosh System in “Applications.” This folder will contain all application support files, which can be used for manual installation.

System Requirements

Windows: Microsoft Windows 2000, Windows XP, Windows Vista®

Macintosh: Mac OS X version 10.2 and later

Please note: It is best to refer to the user manual of the application being used for the most accurate and current information on color palette handling.

Application	Software Version	File Extension	Color Model
Adobe Illustrator	9*, 10, CS	.ai	Adobe 1998 RGB
Adobe Illustrator	CS2, CS3	.acb	CIE L*a*b*, D50, 2°
Adobe Photoshop	7, CS, CS2, CS3	.aco	CIE L*a*b*, D50, 2°
Adobe InDesign	CS	.ai	Adobe 1998 RGB
Adobe InDesign	CS2, CS3	.acb	CIE L*a*b*, D50, 2°

Easy Install Applications

* Adobe Illustrator 9.0 will require you to run in Mac OS X Classic Mode.

Easy Install will place all necessary color library/swatch libraries in its appropriate location for easy access. If you have software applications that are not listed above, please follow our [manual instructions](#) starting on page 8.

Note: Libraries are named:

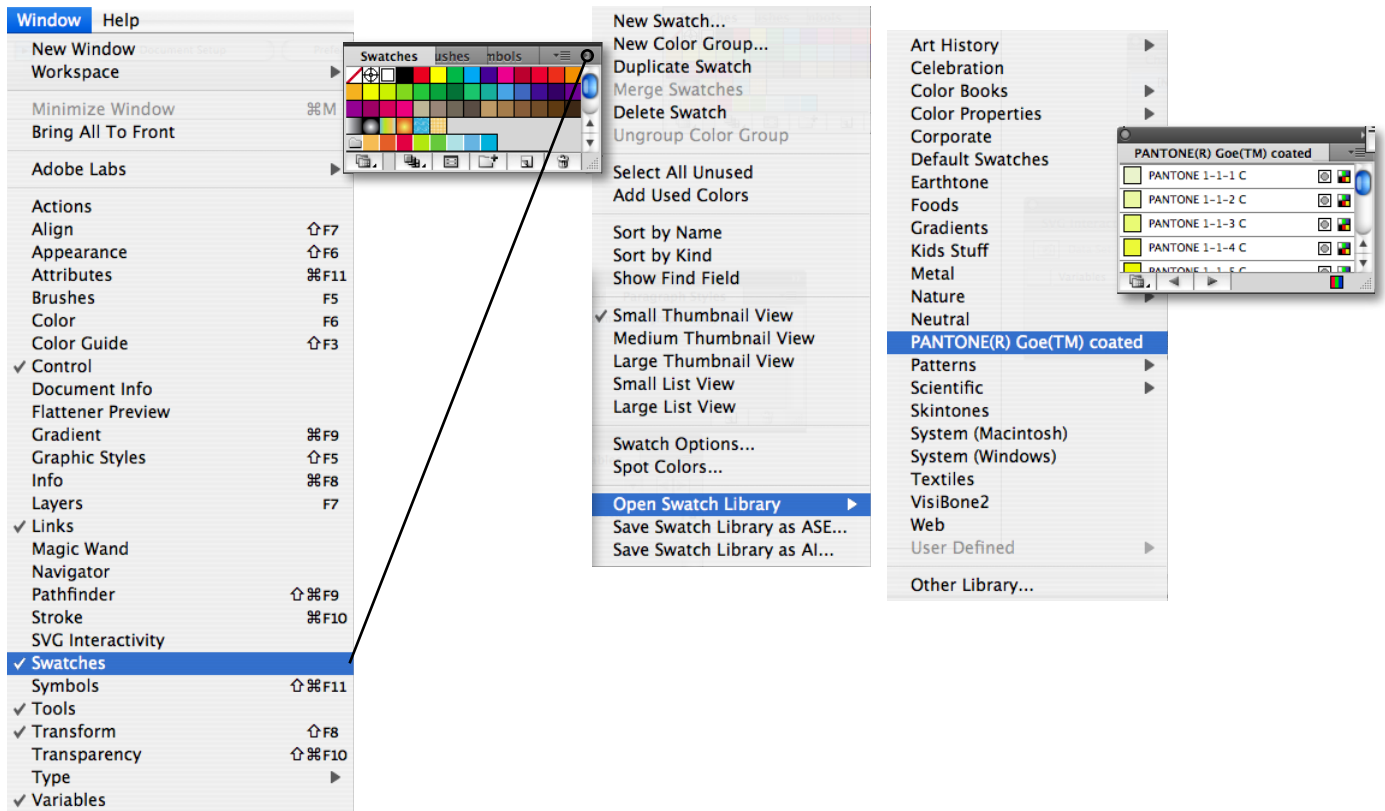
PANTONE(R) Goe(TM) coated

PANTONE(R) Goe(TM) uncoated

How to Access a Color Palette

Adobe Illustrator 9, 10, CS, CS2 & CS3

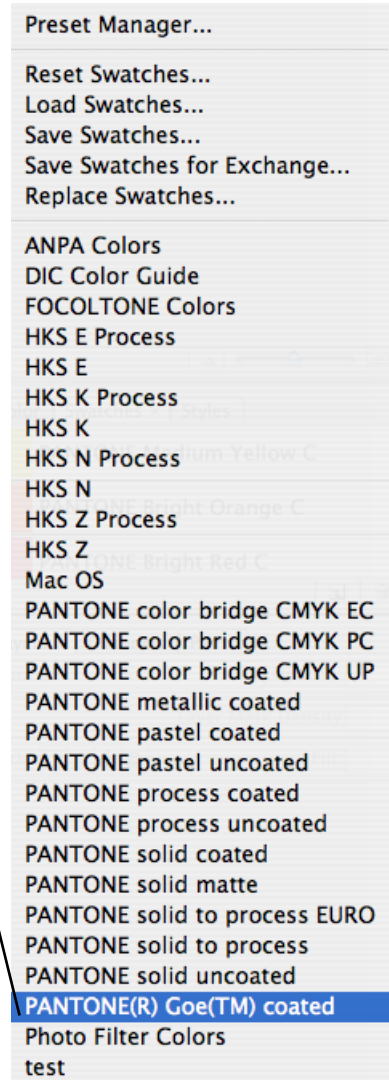
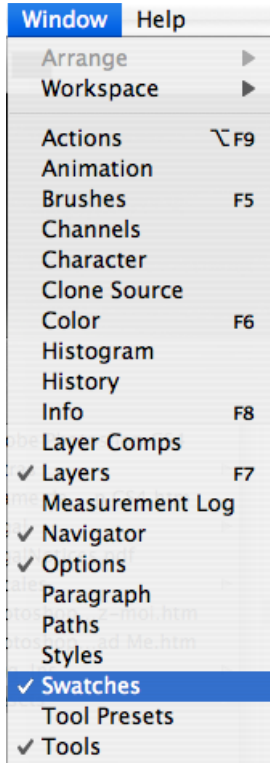
1. Go to Window in the Menu Bar.
2. Select “Swatches” (Adobe Illustrator 9 go to step 4).



3. Click on the small circle/arrow on the top right-hand corner of the Swatches Window.
4. Select “Open Swatch Library.”
5. Select your PANTONE(R) Goe(TM) coated or PANTONE(R) Goe(TM) uncoated Library from the list.
6. Select any color from the numerical or alphabetical list.

Adobe Photoshop 7, CS, CS2 & CS3

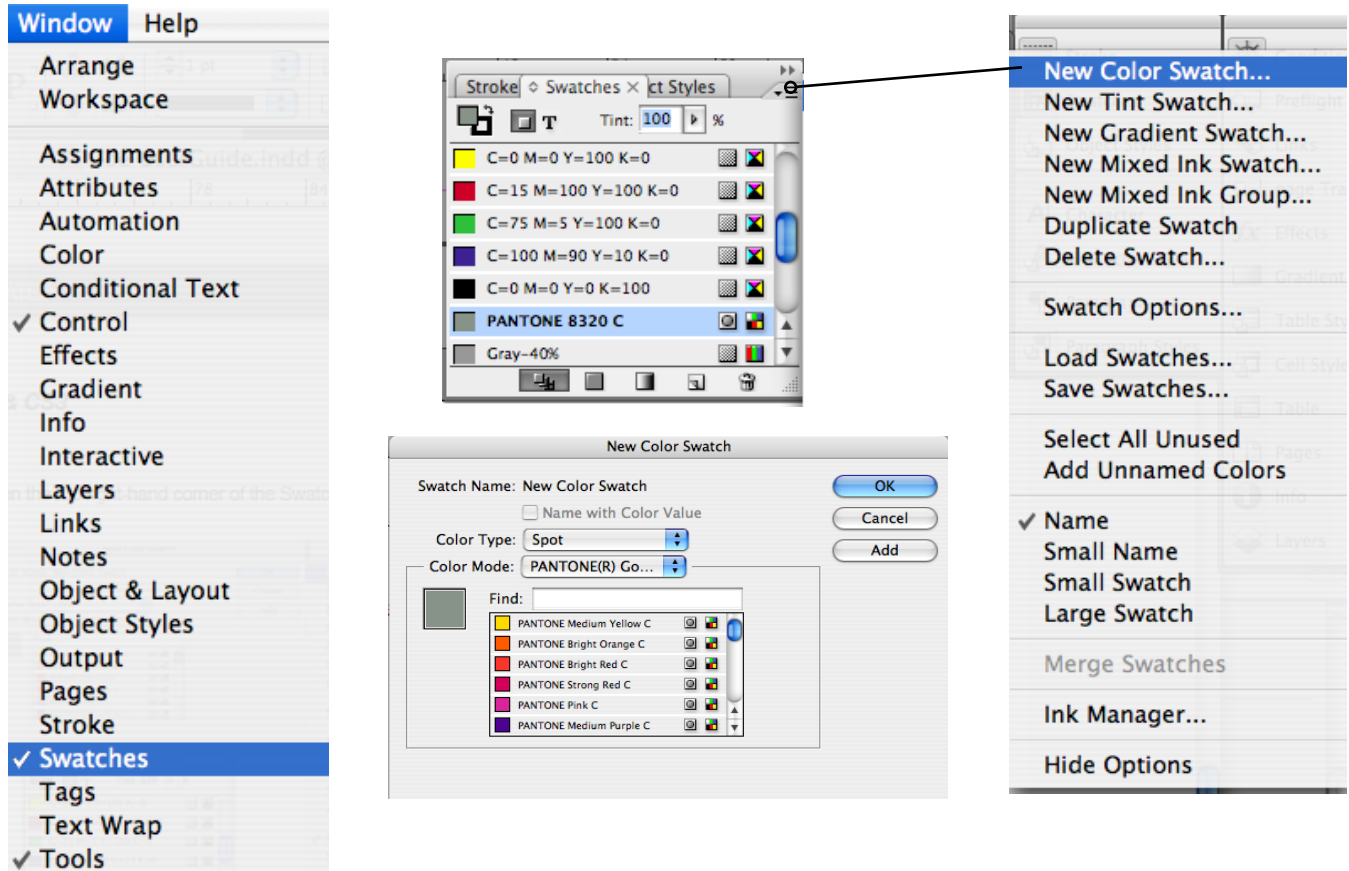
1. Go to Window.
2. Select Swatches.



3. Click on the small circle/arrow on the top right-hand corner of the Swatches Window.
4. Select your PANTONE(R) Goe(TM) coated or PANTONE(R) Goe(TM) uncoated Library.
5. Select any color from the numerical or alphabetical list.

Adobe InDesign CS, CS2 & CS3

1. Go to Window.
2. Select Swatches.
3. Click on the small circle/arrow on the top right-hand corner of the Swatches Window.



5. Select "New Color Swatch." "New Color Swatch" window will appear.
6. Under "Color Mode," click on the pull-down arrow to view the list of libraries.
7. Select your PANTONE(R) Goe(TM) coated or PANTONE(R) Goe(TM) uncoated library.
8. Select any color from the numerical or alphabetical list.

Manual Install Applications

Application	Software Version	File Extension
Adobe Illustrator	8.0 & later	.ai
Adobe Photoshop	5.5 & later	.aco
Adobe InDesign	2.0 & later	.ai

This section explains the general steps to follow to load a color palette into other applications. In addition to following these general guidelines, refer to the manuals that came with the other applications for detailed information about loading and using color palettes. The installer will place the PANTONE Goe Digital Libraries folder on your Windows System in Program Files and on your Macintosh Systems in Applications. This folder will contain all application support files, which can be used for manual installation.

Note: Libraries are named:

PANTONE(R) Goe(TM) coated

PANTONE(R) Goe(TM) uncoated

Adobe Illustrator: Version 8.0 & later

1. From the menu bar, choose Window > Swatch Libraries > Other Library
2. Then navigate to your hard drive; locate the PANTONE Goe Digital Libraries folder; select the folder with your PANTONE Goe Digital Libraries.
3. Open the Application Support Folder > Adobe > Illustrator.
4. Select any color for the palette list.
5. Select the .ai file and click OK.

Adobe Photoshop: Version 5.5 & later

1. From the menu bar, choose Window > Swatches.
2. Click the arrow in the upper right corner of the Swatches Window.
3. Select Load Swatches.
4. Navigate to your hard drive; locate the PANTONE Goe Digital Libraries folder; select the folder with your PANTONE Goe Digital Libraries.
5. Open the Application Support Folder > Adobe > Photoshop.
6. Select the .aco file and Load.

Adobe InDesign: Version 2.0 & later

1. Open a New or Existing File.
2. From the menu bar, choose Window > Swatches.
3. Choose New Color Swatch in the Swatches palette menu.
4. From Color Mode, select Other Library.
5. Navigate to your hard drive; locate the PANTONE Goe Digital Libraries folder; select the folder with your PANTONE Goe Digital Libraries.
6. Open the Application Support Folder > Adobe > InDesign.
7. Select the .ai file and click OK.

Technical Support

Pantone is committed to offering you immediate and polite technical support. Technical support is provided at no charge to registered users of our products. Please be sure to provide a concise description of your problem including your system specifics.

You can reach Pantone Technical Support several ways:

- 1) Telephone: 201.935.5500, Monday - Friday, 8:00 a.m. to 6:00 p.m., Eastern Time
- 2) Fax: 201.896.0242. Make sure you indicate whether you want a reply by telephone, fax or E-mail. Don't forget to include your telephone, fax number or E-mail address.
- 3) Online: <http://www.askpantone.com>

How to Contact Us

To reach our Customer Service Department, please call 888.726.8663 (888.PANTONE). For more information on other PANTONE Products, please visit our Web site at www.pantone.com.

WESTERN HEMISPHERE

Pantone, Inc.
590 Commerce Boulevard
Carlstadt, NJ 07072-3098 U.S.A.
Telephone: 201.935.5500
Fax: 201.896.0242
E-mail: corpny@pantone.com

EUROPE, MIDDLE EAST AND AFRICA

Pantone Europe GmbH
E-mail: infoeuro@pantone.com

ASIA PACIFIC

Pantone Asia, Inc.
E-mail: sales@pantone.hk

JAPAN

Pantone Japan Co., Ltd.
E-mail: infojapan@pantone.com